

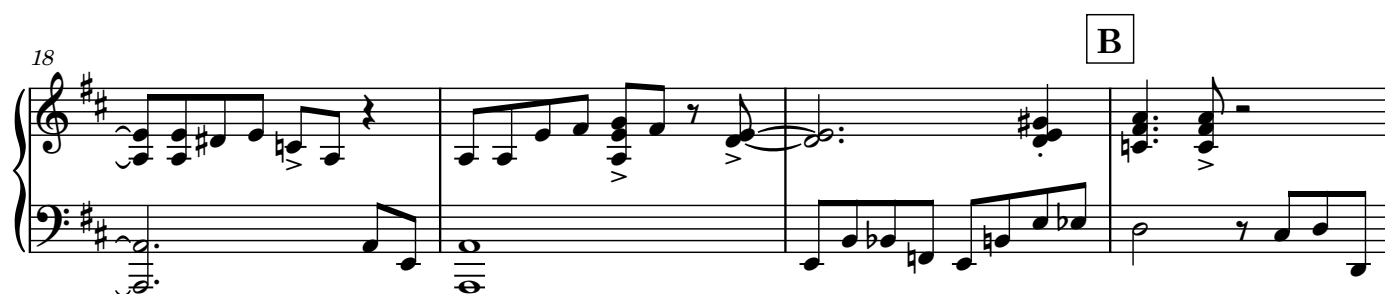
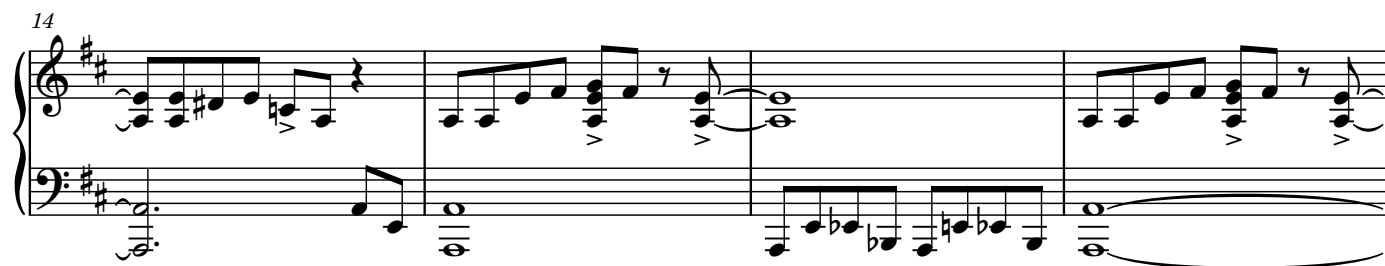
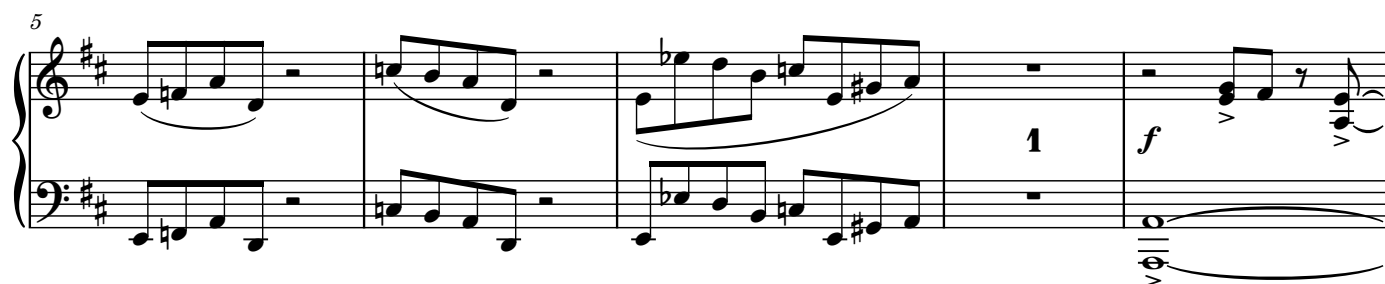
PIANO

CHILDREN SUITE NO. 4

Children Suite No. 4

1.

Allegro ♩ = 132



22

Measures 22-26 of a piano piece. The key signature has two sharps (F# and C#). Measure 22 features a triplet of eighth notes in the right hand and a quarter note in the left. Measures 23-24 have rests in the right hand and eighth-note patterns in the left. Measure 25 has a half-note chord in the right hand and a half-note in the left. Measure 26 has a half-note chord in the right hand and a half-note in the left. Dynamics include *mp* (mezzo-piano) and a crescendo hairpin.

27

Measures 27-30 of a piano piece. Measure 27 has a half-note chord in the right hand and a half-note in the left. Measure 28 has a half-note chord in the right hand and a half-note in the left. Measure 29 has a half-note chord in the right hand and a half-note in the left. Measure 30 has a half-note chord in the right hand and a half-note in the left. Dynamics include *cresc.* (crescendo), *ff* (fortissimo), and a crescendo hairpin.

31

C

Measures 31-35 of a piano piece. Measure 31 features a triplet of eighth notes in the right hand and a quarter note in the left. Measures 32-33 have rests in the right hand and eighth-note patterns in the left. Measure 34 has a half-note chord in the right hand and a half-note in the left. Measure 35 has a half-note chord in the right hand and a half-note in the left. Dynamics include *mp* (mezzo-piano) and a crescendo hairpin.

36

Measures 36-39 of a piano piece. Measure 36 has a half-note chord in the right hand and a half-note in the left. Measure 37 has a half-note chord in the right hand and a half-note in the left. Measure 38 has a half-note chord in the right hand and a half-note in the left. Measure 39 has a half-note chord in the right hand and a half-note in the left. Dynamics include *dim.* (diminuendo) and a diminuendo hairpin.

40

Measures 40-43 of a piano piece. Measure 40 has a half-note chord in the right hand and a half-note in the left. Measure 41 has a half-note chord in the right hand and a half-note in the left. Measure 42 has a half-note chord in the right hand and a half-note in the left. Measure 43 has a half-note chord in the right hand and a half-note in the left. Dynamics include *p* (piano), *dim.* (diminuendo), and *pp* (pianissimo).

2.

Musical score for "The Rose Tree" in G major, 4/4 time. The score is for a piano and includes measures 1 through 28. It features a repeating bass line in the left hand and a melody in the right hand. The piece is marked *p legato* and includes dynamic markings like *mp* and *mf*. There are also "etc." markings and a "Red." (Reduction) label. The score is divided into sections A and B.

29 C

Ped. *Ped.* *Ped.* *f*

33

Ped. *Ped.* *Ped.* *Ped.*

37 rit. a tempo

Ped. *Ped.* *Ped.* *Ped.* *mp* *Ped.* *Ped.*

42 D

Ped. *Ped.* *Ped.* *Ped.* *Ped.* *Ped.* *Ped.*

47

Ped. *Ped.* *Ped.* *Ped.*

51 rit.

dim. *p* *pp* *Ped.* *Ped.* *Ped.*

PIANO

3.

Allegro moderato ♩ = 120

28 C

mp stacc.

33 D

cresc.

f

38

43

ff